



# PROJECT INFO





# PROJECT DETAILS



<b>PROJECT NAME</b>	Aspen Condo Lasalle
<b>LOCATION</b>	Soi Lasalle (Sukhumvit 105 Rd.) Bangna, Bangkok
<b>LAND AREA</b>	3-3-78.1 rai
<b>PROJECT TYPE</b>	8-Storey condominium, 2 buildings, 425 units
<b>OWNER</b>	Mana Patanakarn Co., Ltd.
<b>ARCHITECT</b>	ARbay Co., Ltd.
<b>INTERIOR ARCHITECT</b>	N7A Co., Ltd.
<b>LANDSCAPE ARCHITECT</b>	Landscape Architects of Bangkok Co., Ltd.
<b>FACILITIES</b>	Garden, swimming pool, fitness, recreation area, reading room
<b>SECURITY SYSTEM</b>	24-hour security guard, key card access and CCTV

02 136 5995  
MANAPAT.CO.TH



\*Terms and conditions apply. / Remark: Developer reserves the right to change the above information without prior notice.

# LOCATION



## ASPEN CONDO

- Located on Sukhumvit 105 (Lasalle) Road
- Connected to several main roads, such as Srinakarin and Bangna-Trad
- Convenient access to MRT Sukhumvit Line (Mo Chit – Bearing), via Bangna and Bearing Station
- Coming in the near future, MRT Yellow Line (Ladprao - Samrong), with Sri Lasalle station only 500 meters away on the Srinakarin Road.
- Moreover, Aspen Condo is located among premium community with shopping malls, exhibition center, schools, and hospital nearby.

02 136 5995  
MANAPAT.CO.TH



\*Terms and conditions apply. / Remark: Developer reserves the right to change the above information without prior notice.

# PESPECTIVES





Computer generated image

# OVERVIEW



\*Terms and conditions apply. / Remark: Developer reserves the right to change the above information without prior notice.



Computer generated image

# FRONT VIEW



\*Terms and conditions apply. / Remark: Developer reserves the right to change the above information without prior notice.

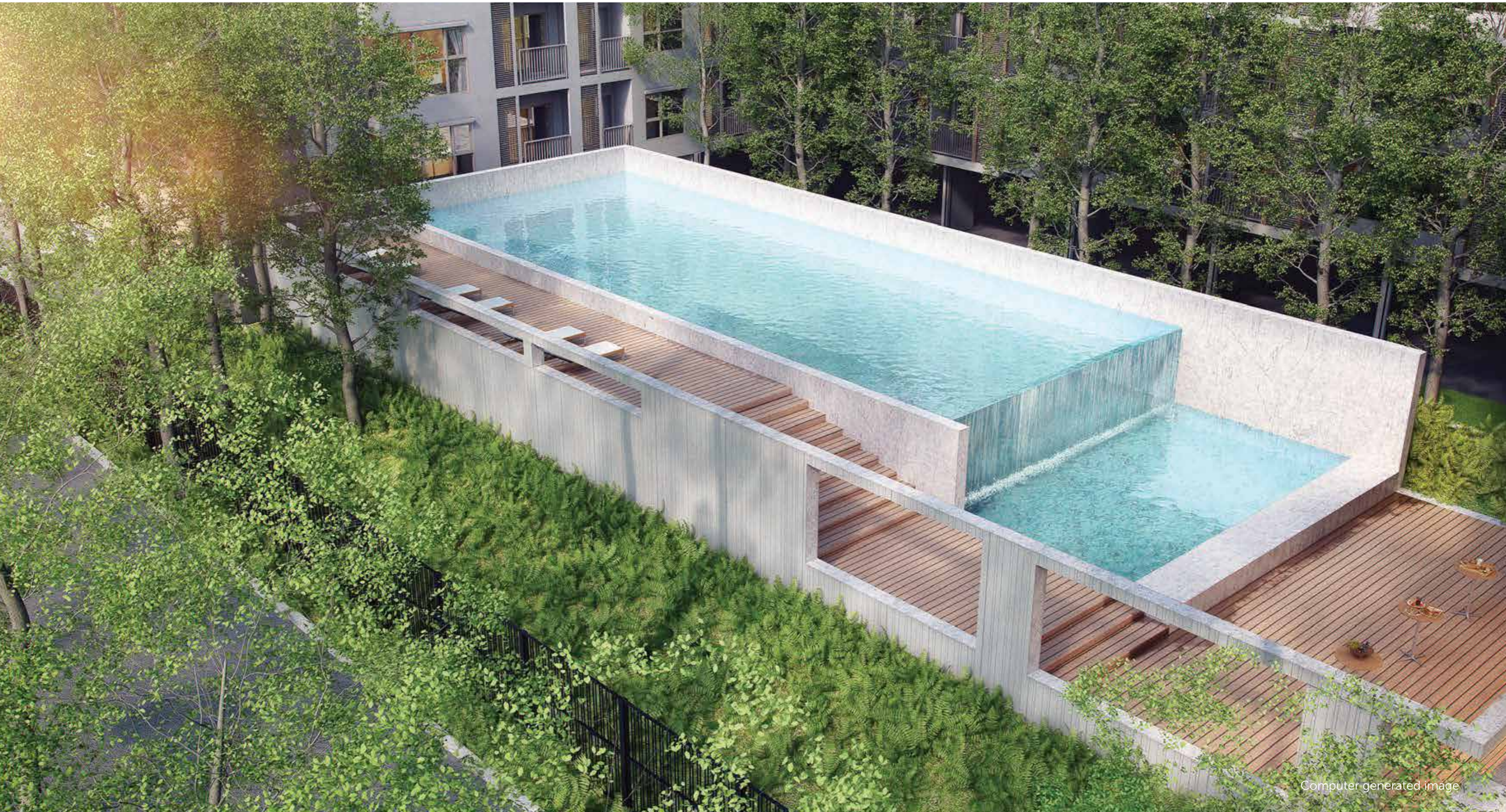


Computer generated image

# ENTRANCE



\*Terms and conditions apply. / Remark: Developer reserves the right to change the above information without prior notice.



Computer generated image

# SWIMMING POOL



\*Terms and conditions apply. / Remark: Developer reserves the right to change the above information without prior notice.

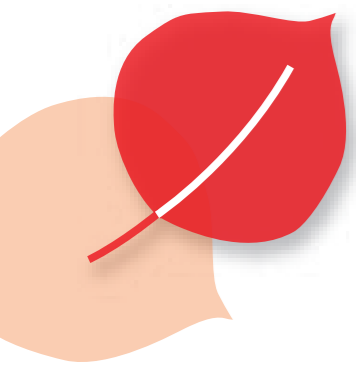
# PROJECT PLANS



# MASTER PLAN

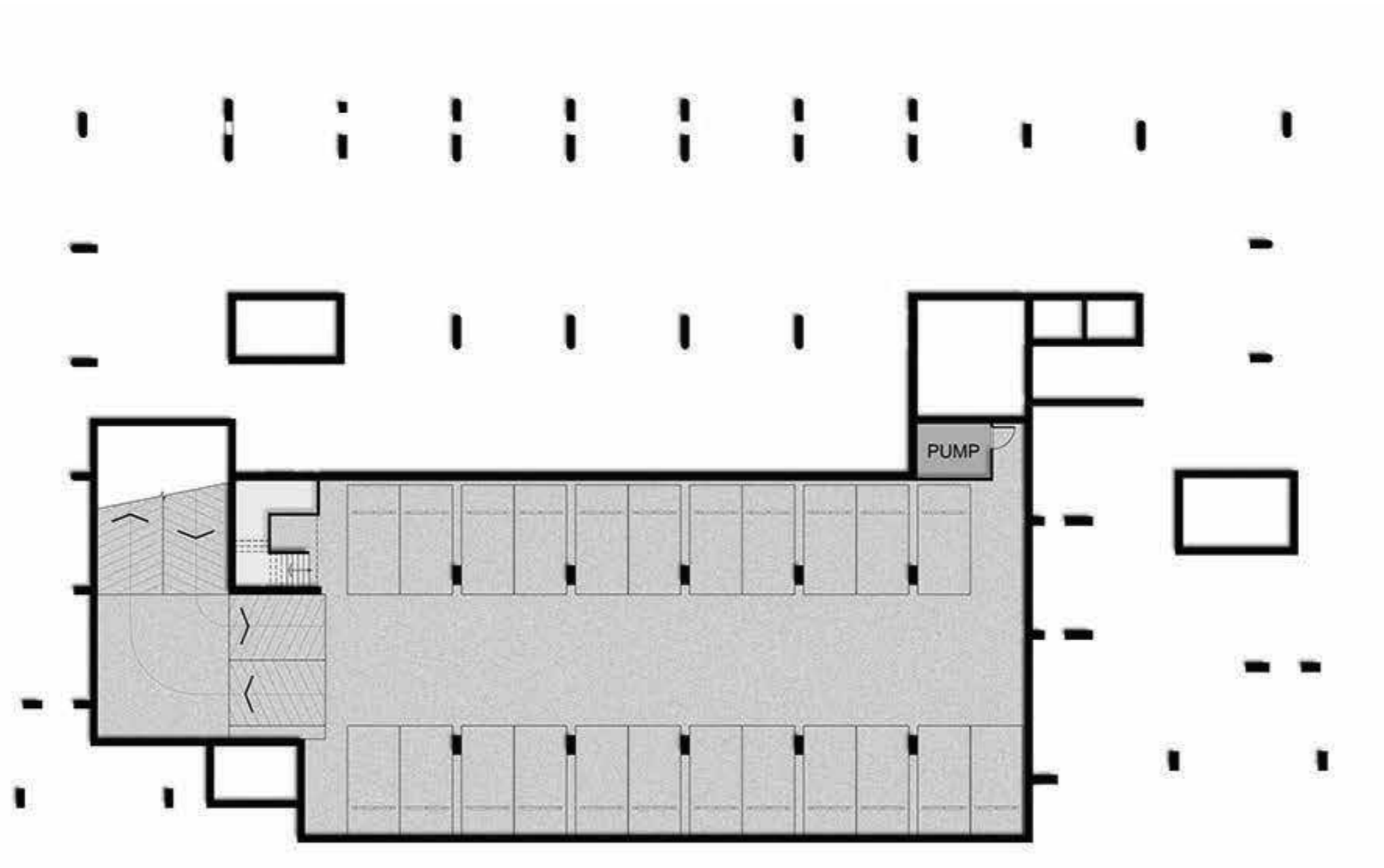
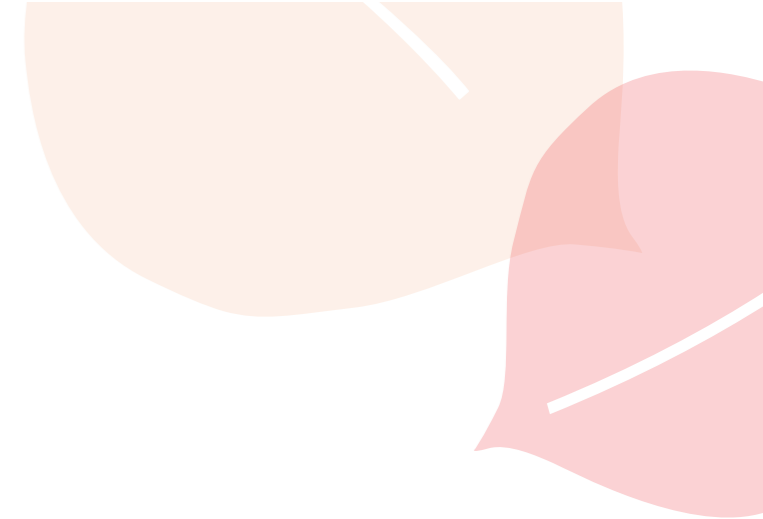


\*Terms and conditions apply. / Remark: Developer reserves the right to change the above information without prior notice.



# BUILDING 1

## Basement



\*Terms and conditions apply. / Remark: Developer reserves the right to change the above information without prior notice.

# BUILDING 1

## Ground Floor



# BUILDING 1

## Second Floor



\*Terms and conditions apply. / Remark: Developer reserves the right to change the above information without prior notice.

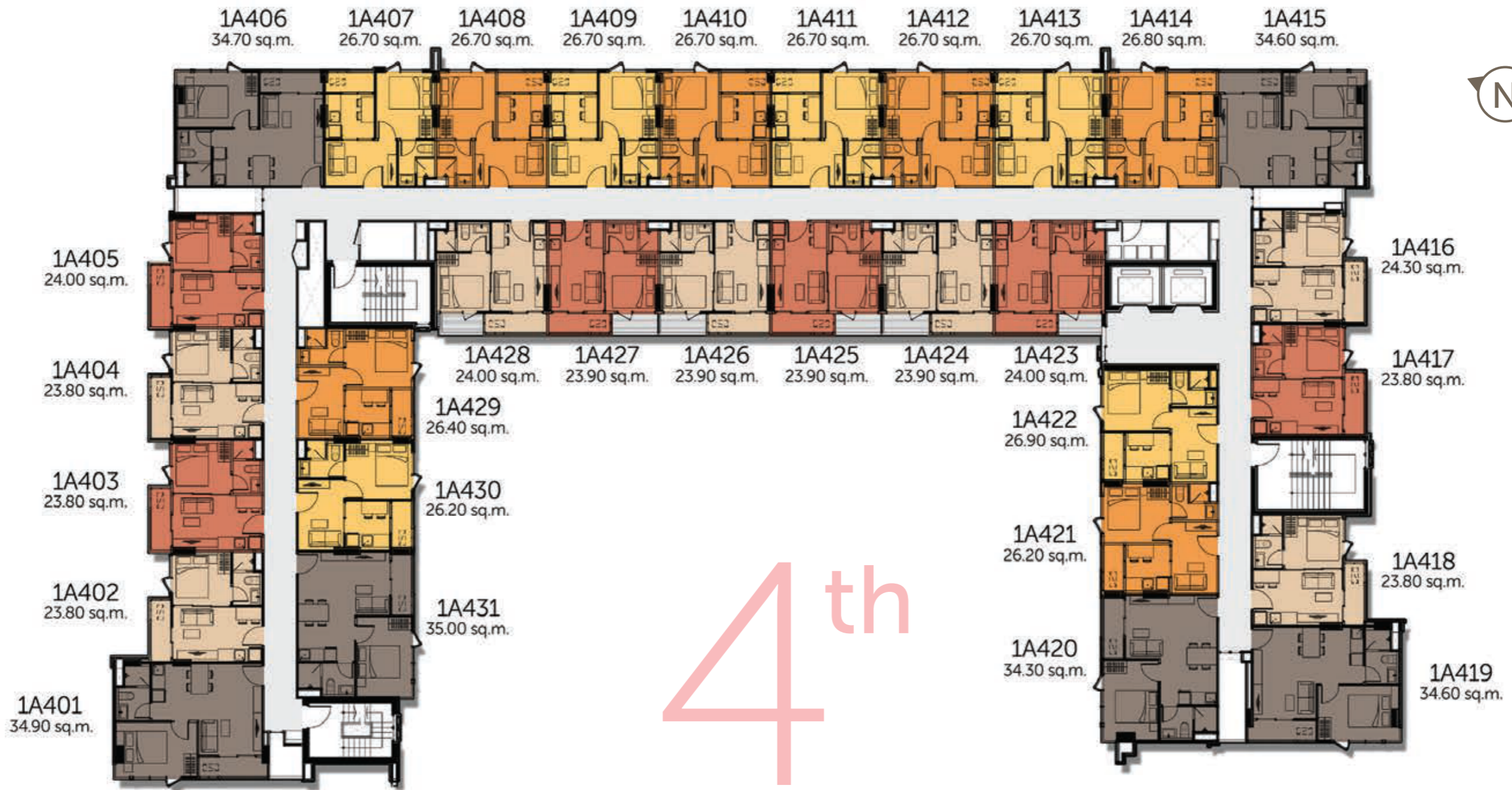
# BUILDING 1

## Third Floor



# BUILDING 1

## Fourth Floor



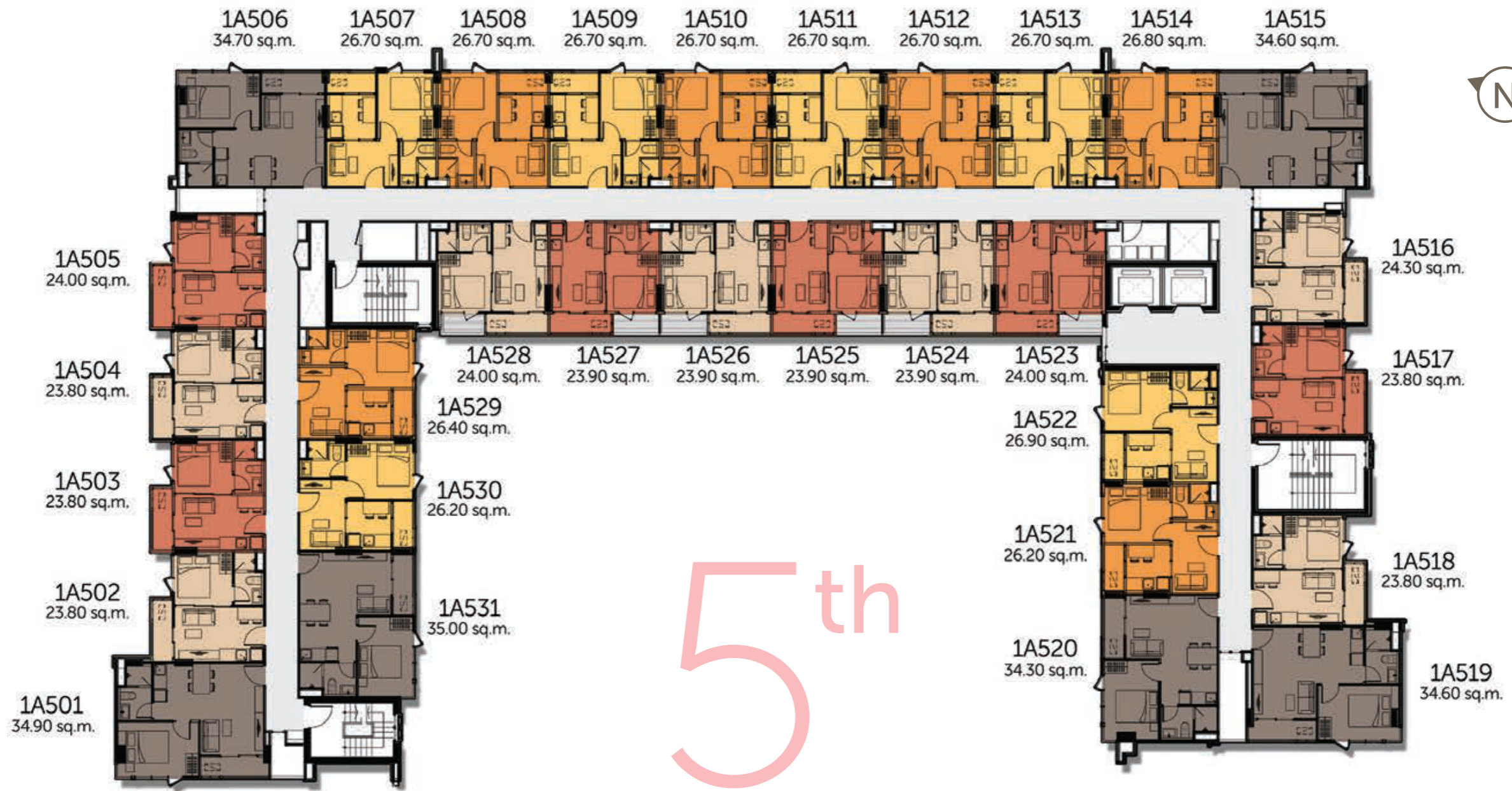
4<sup>th</sup>



\*Terms and conditions apply. / Remark: Developer reserves the right to change the above information without prior notice.

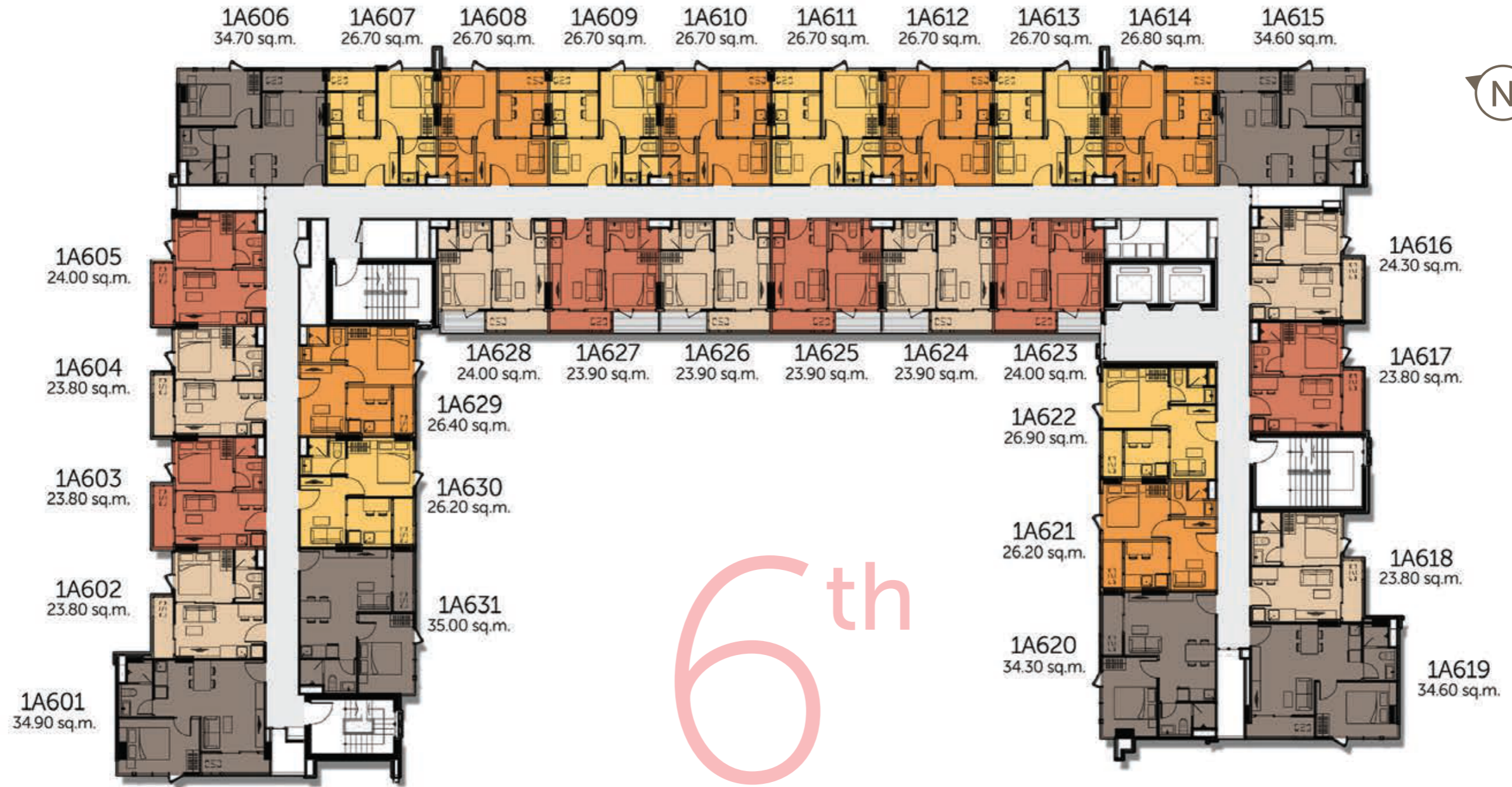
# BUILDING 1

## Fifth Floor



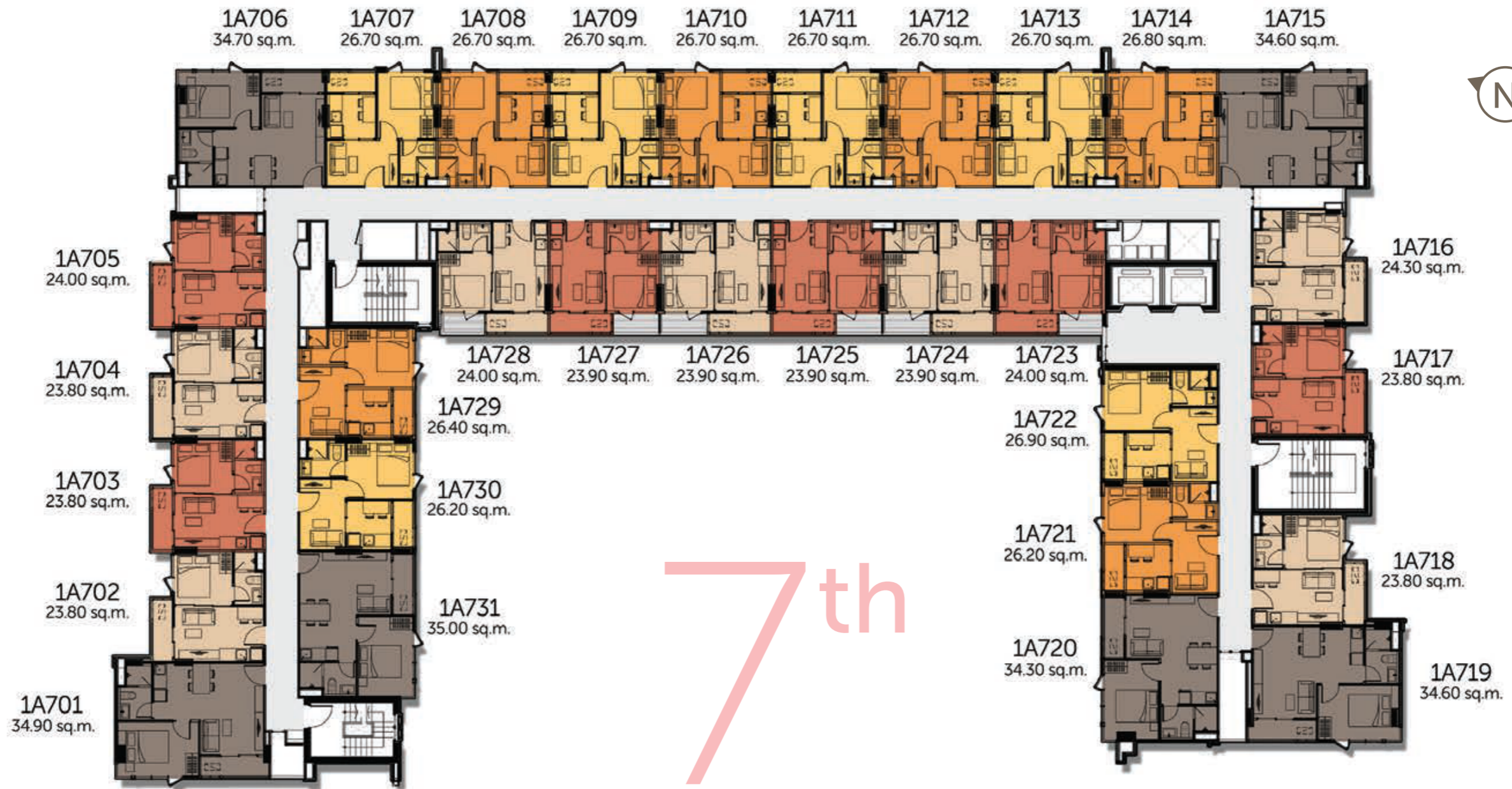
# BUILDING 1

## Sixth Floor



# BUILDING 1

## Seventh Floor



# BUILDING 1

## Eighth Floor

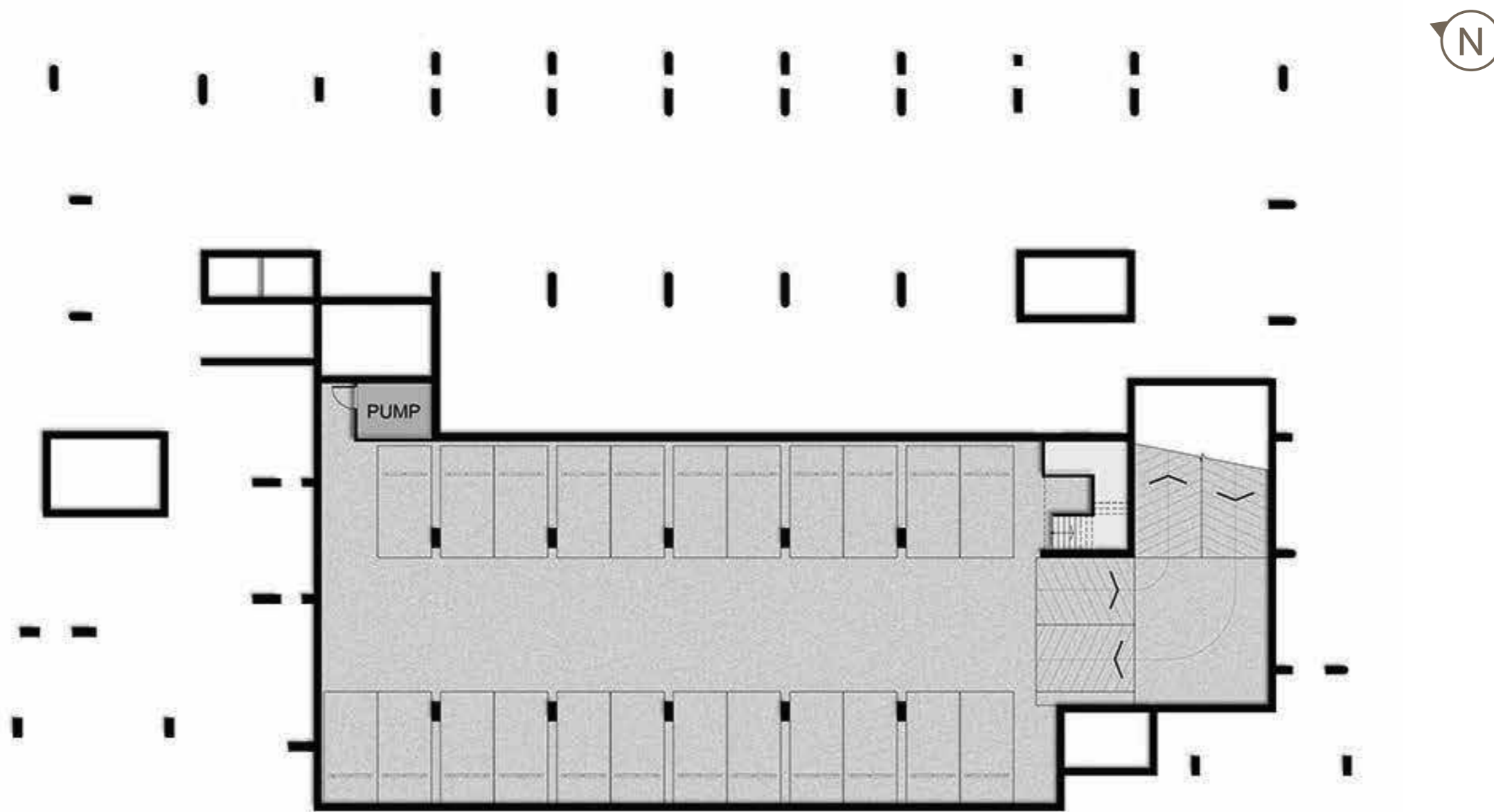


# PROJECT PLANS



# BUILDING 2

## Basement



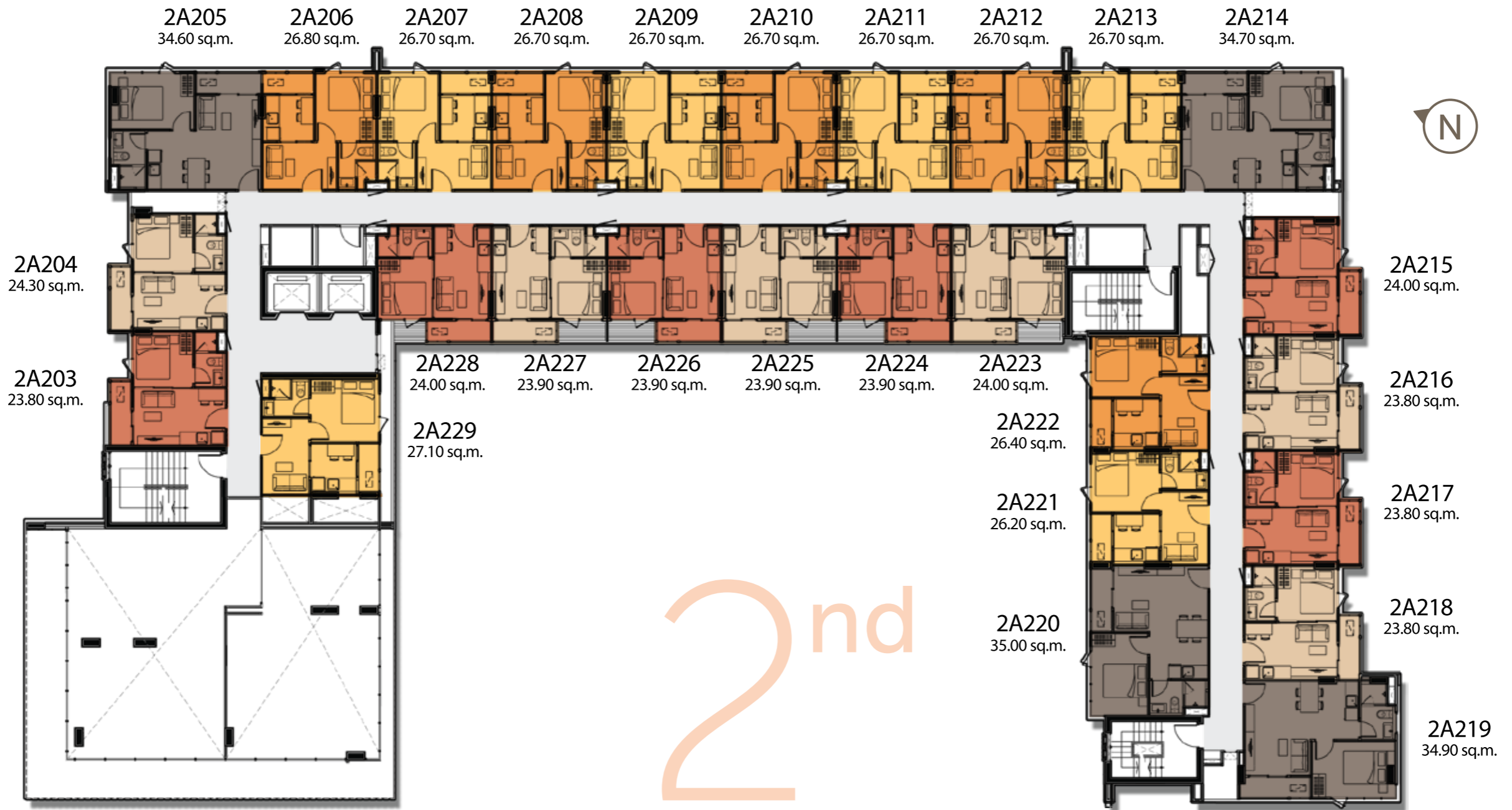
# BUILDING 2

## Ground Floor



# BUILDING 2

## Second Floor



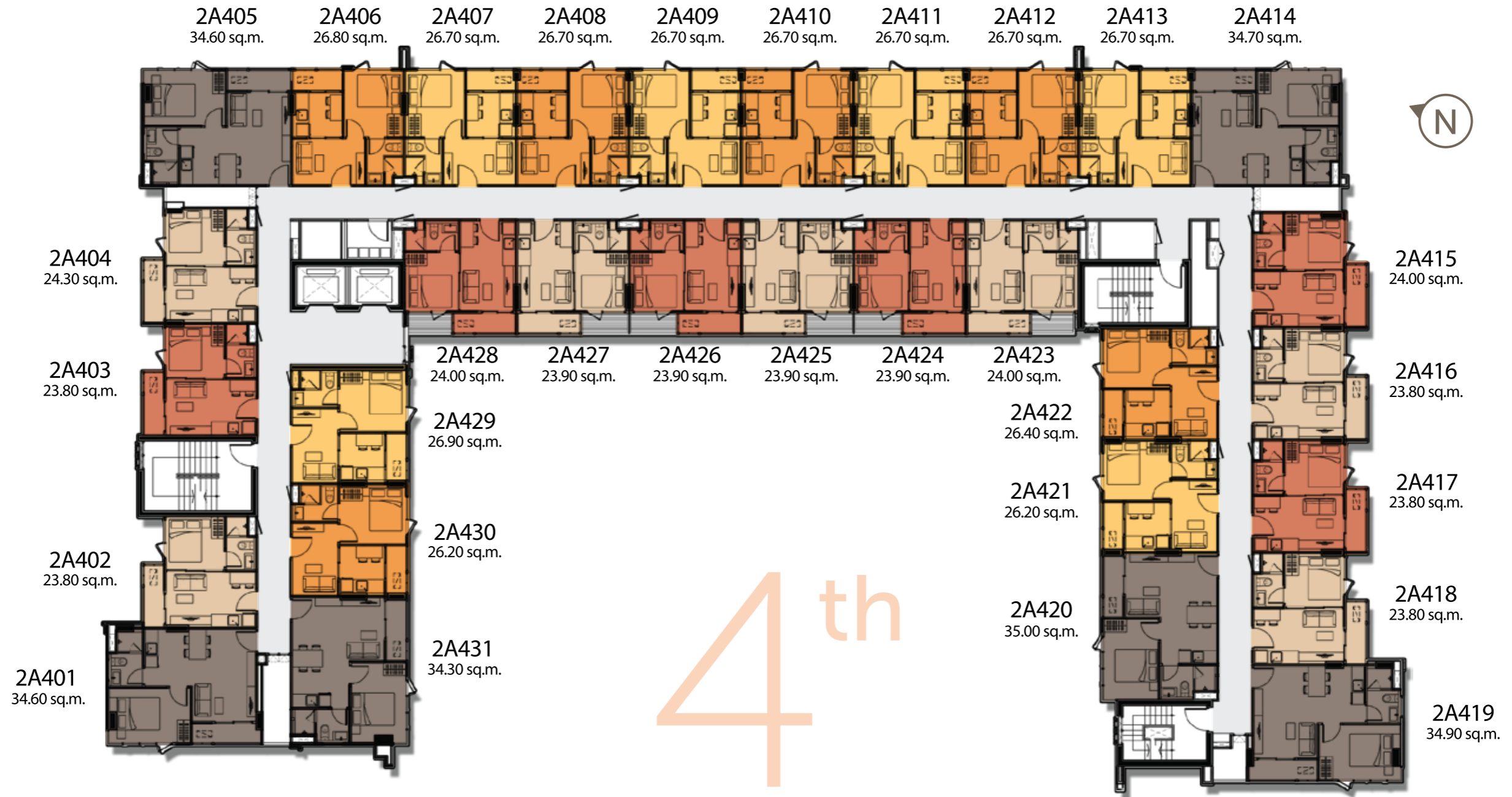
# BUILDING 2

## Third Floor



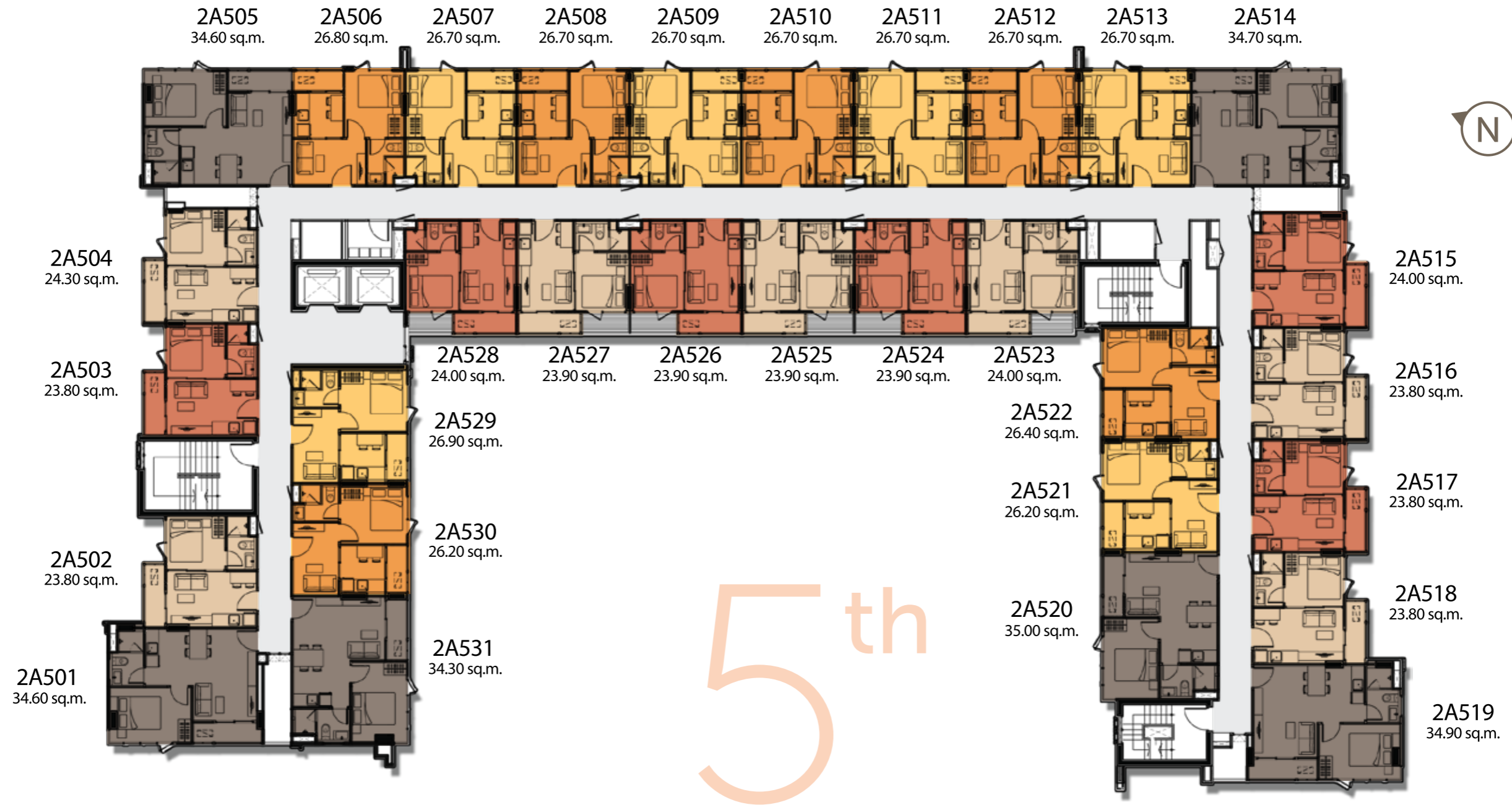
# BUILDING 2

## Fourth Floor



# BUILDING 2

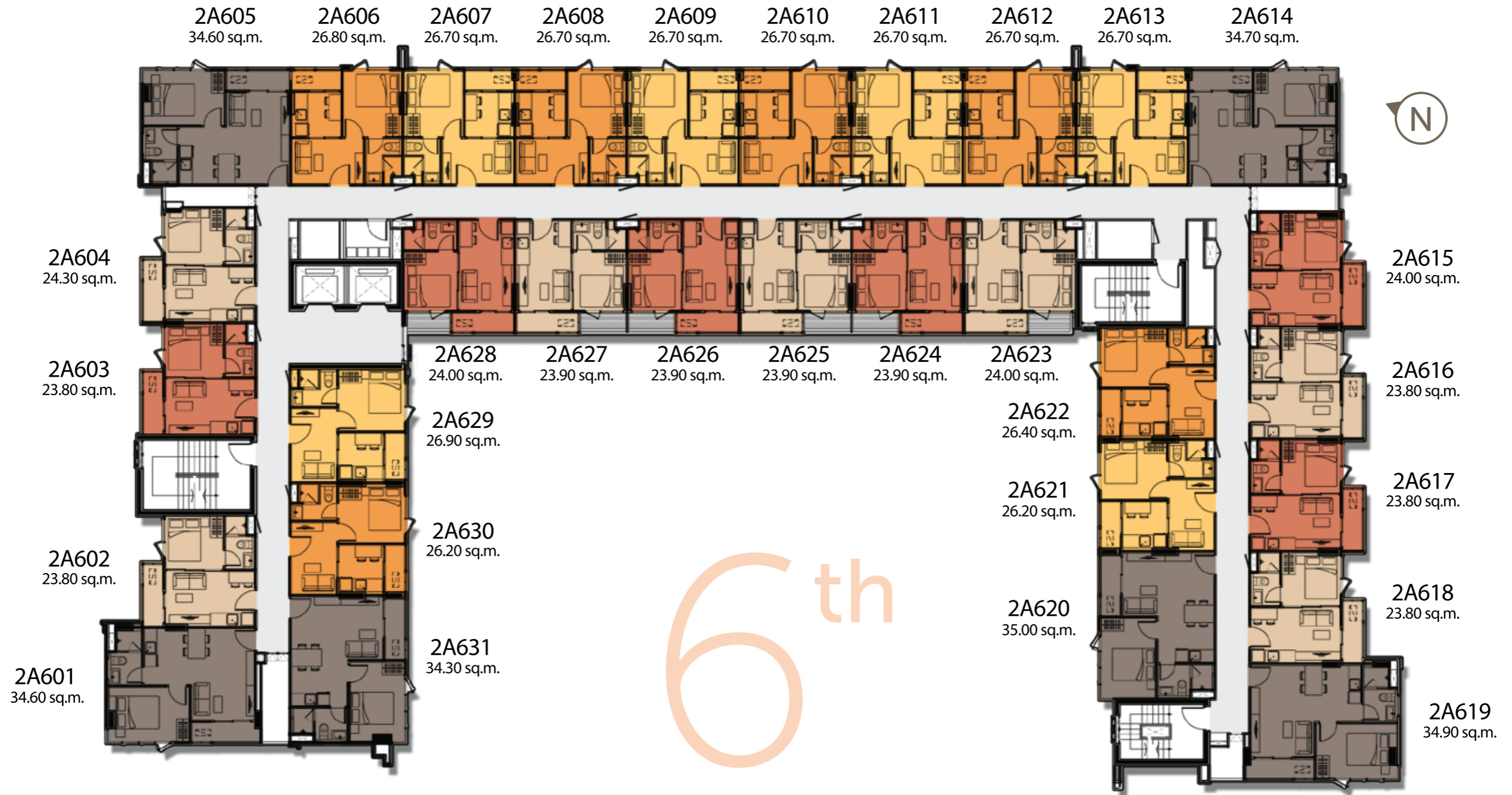
## Fifth Floor



\*Terms and conditions apply. / Remark: Developer reserves the right to change the above information without prior notice.

# BUILDING 2

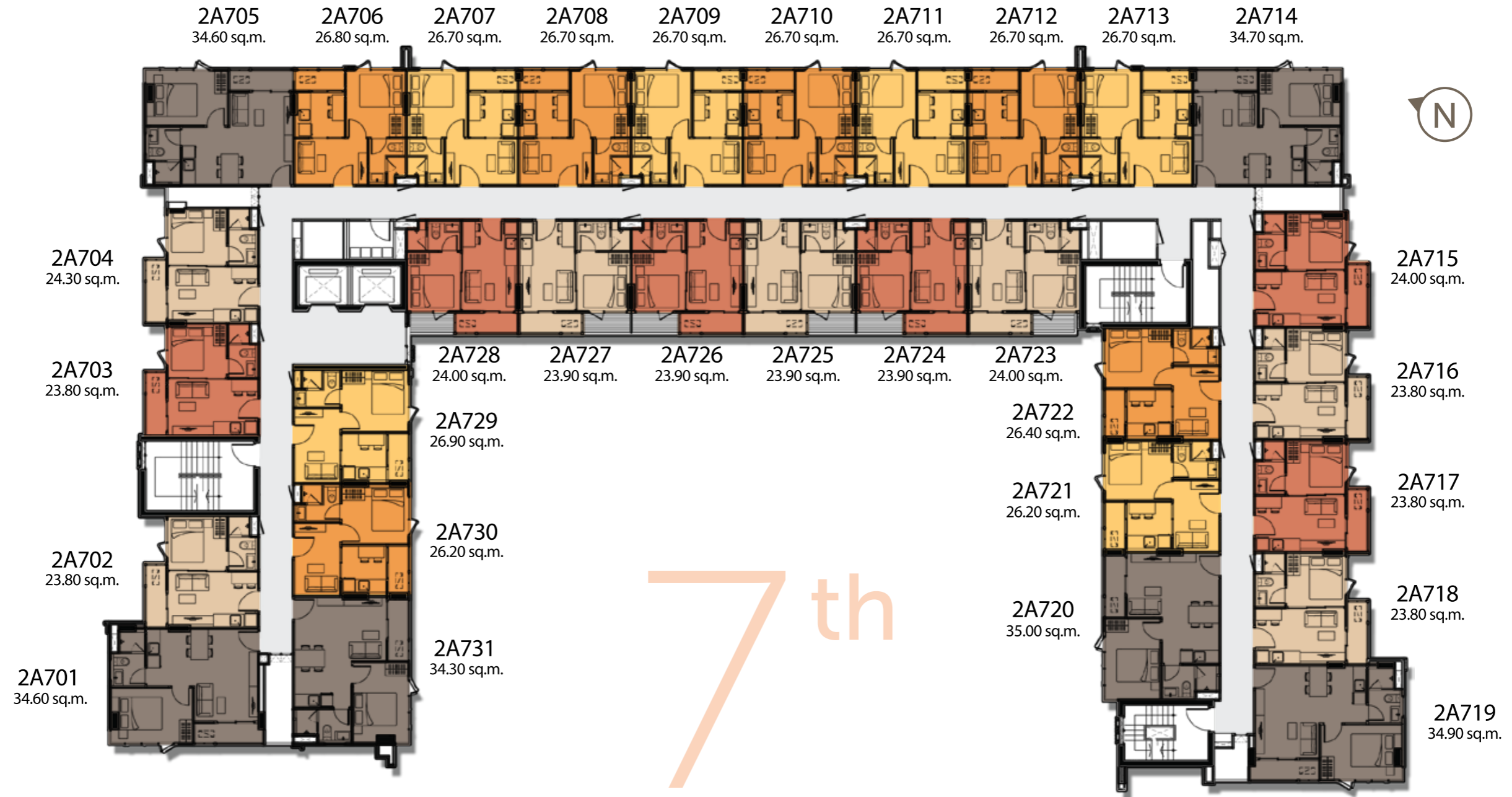
## Sixth Floor



\*Terms and conditions apply. / Remark: Developer reserves the right to change the above information without prior notice.

# BUILDING 2

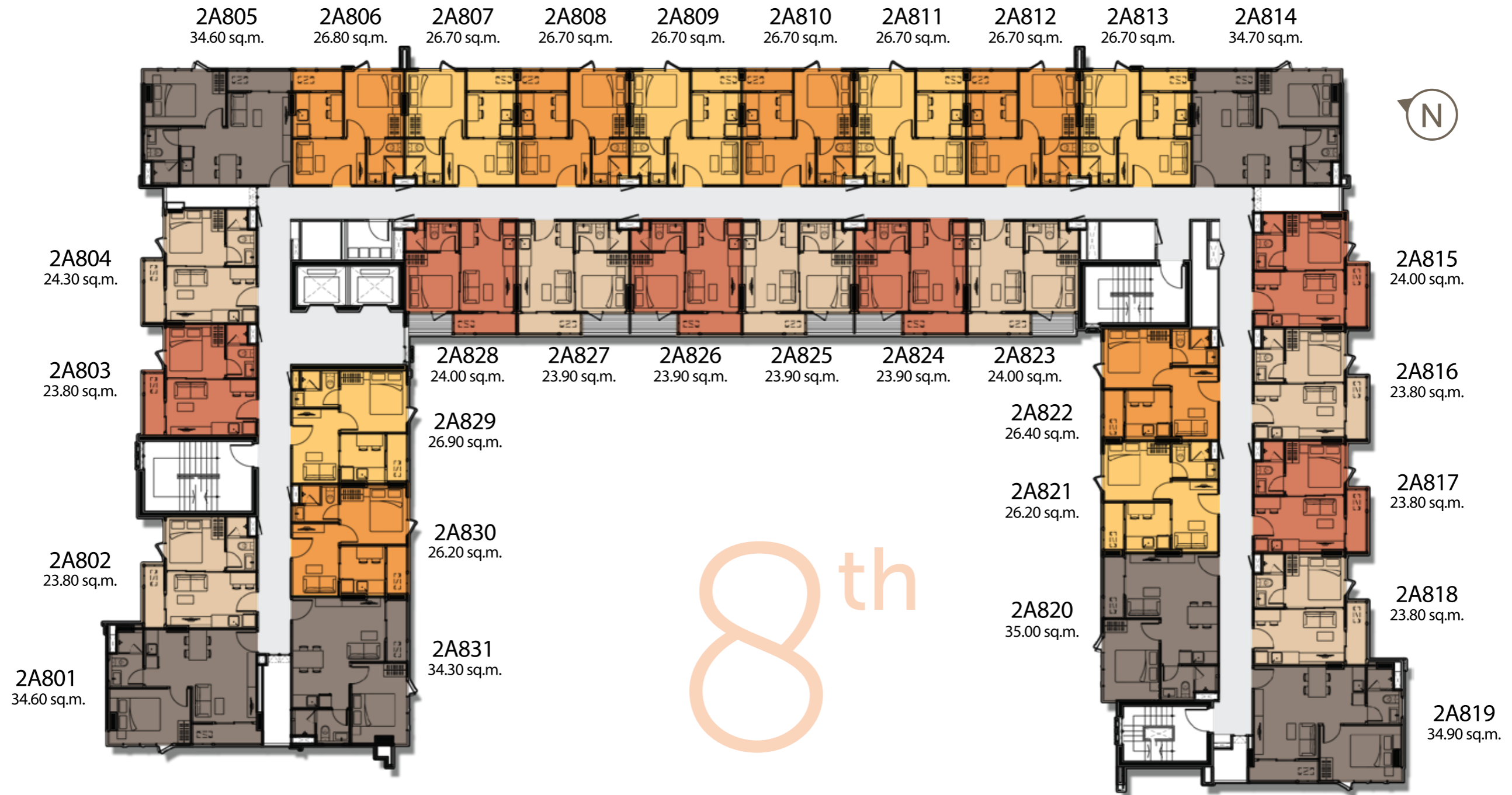
## Seventh Floor



\*Terms and conditions apply. / Remark: Developer reserves the right to change the above information without prior notice.

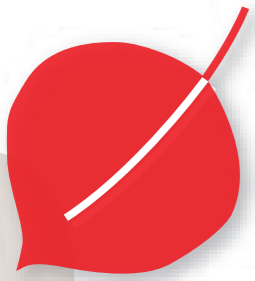
# BUILDING 2

## Eighth Floor



\*Terms and conditions apply. / Remark: Developer reserves the right to change the above information without prior notice.

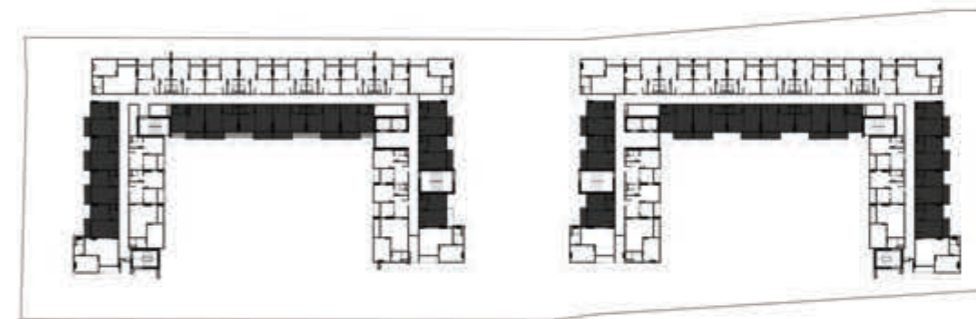
# ROOM TYPES & INTERIORS



# ONE BEDROOM TYPE A



**AREA**  
23.80 - 24.30 sq.m.



\*Terms and conditions apply. / Remark: Developer reserves the right to change the above information without prior notice.



Computer generated image

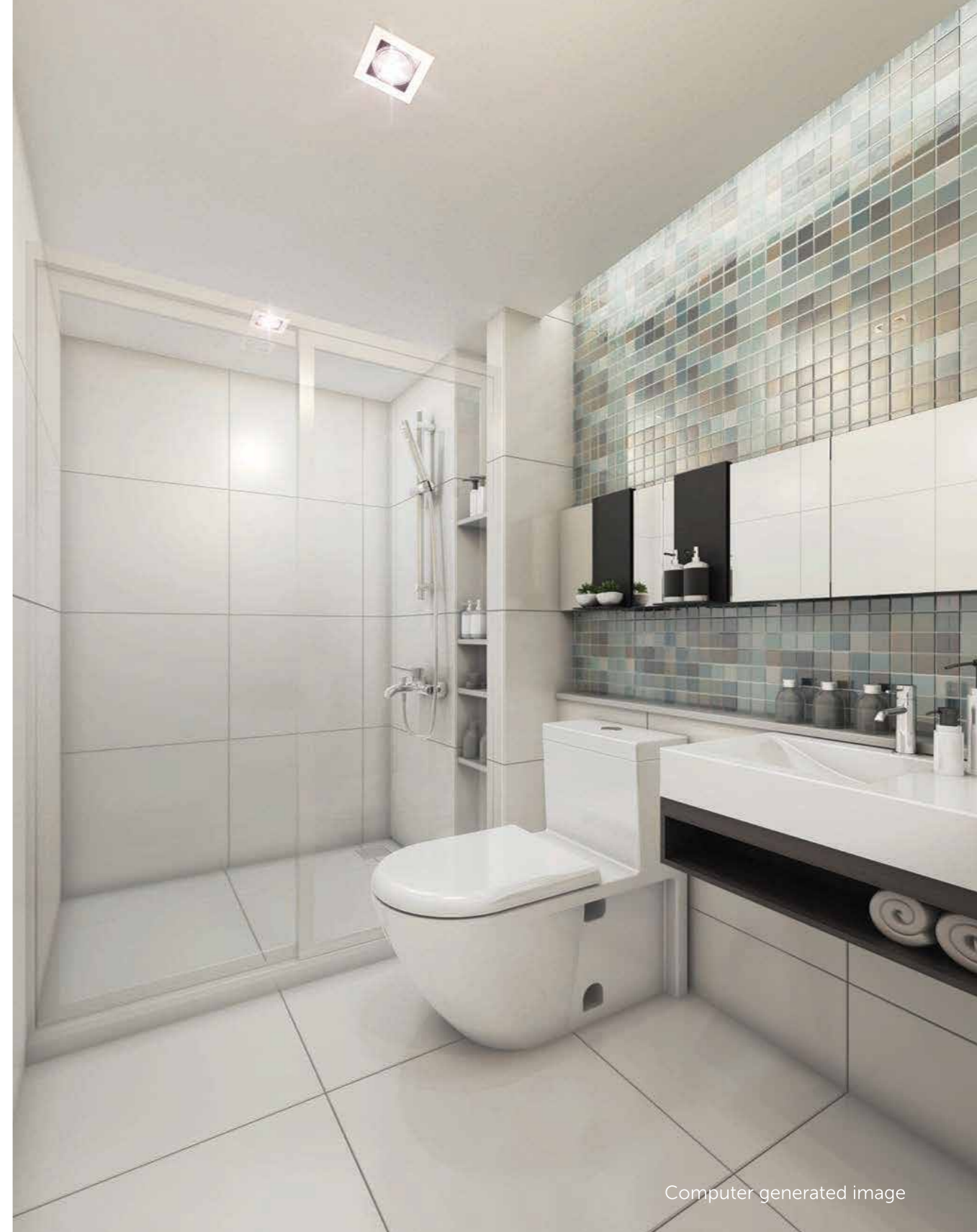
# ONE BEDROOM TYPE A - Living Room



\*Terms and conditions apply. / Remark: Developer reserves the right to change the above information without prior notice.



Computer generated image



Computer generated image

# ONE BEDROOM

## TYPE A - Bedroom / Bathroom



\*Terms and conditions apply. / Remark: Developer reserves the right to change the above information without prior notice.

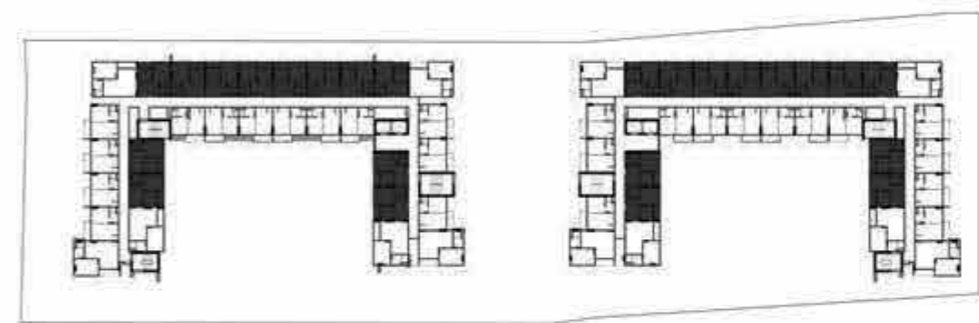


# ONE BEDROOM TYPE B



## AREA

26.20 - 27.10 sq.m.





# ONE BEDROOM TYPE B - Living Room



\*Terms and conditions apply. / Remark: Developer reserves the right to change the above information without prior notice.



Computer generated image

# ONE BEDROOM

## TYPE B - Bedroom



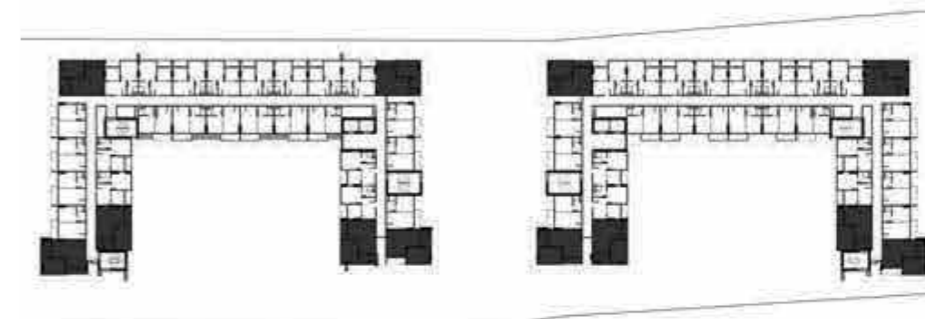
\*Terms and conditions apply. / Remark: Developer reserves the right to change the above information without prior notice.



# ONE BEDROOM TYPE C



**AREA**  
34.30 - 35.00 sq.m.



\*Terms and conditions apply. / Remark: Developer reserves the right to change the above information without prior notice.

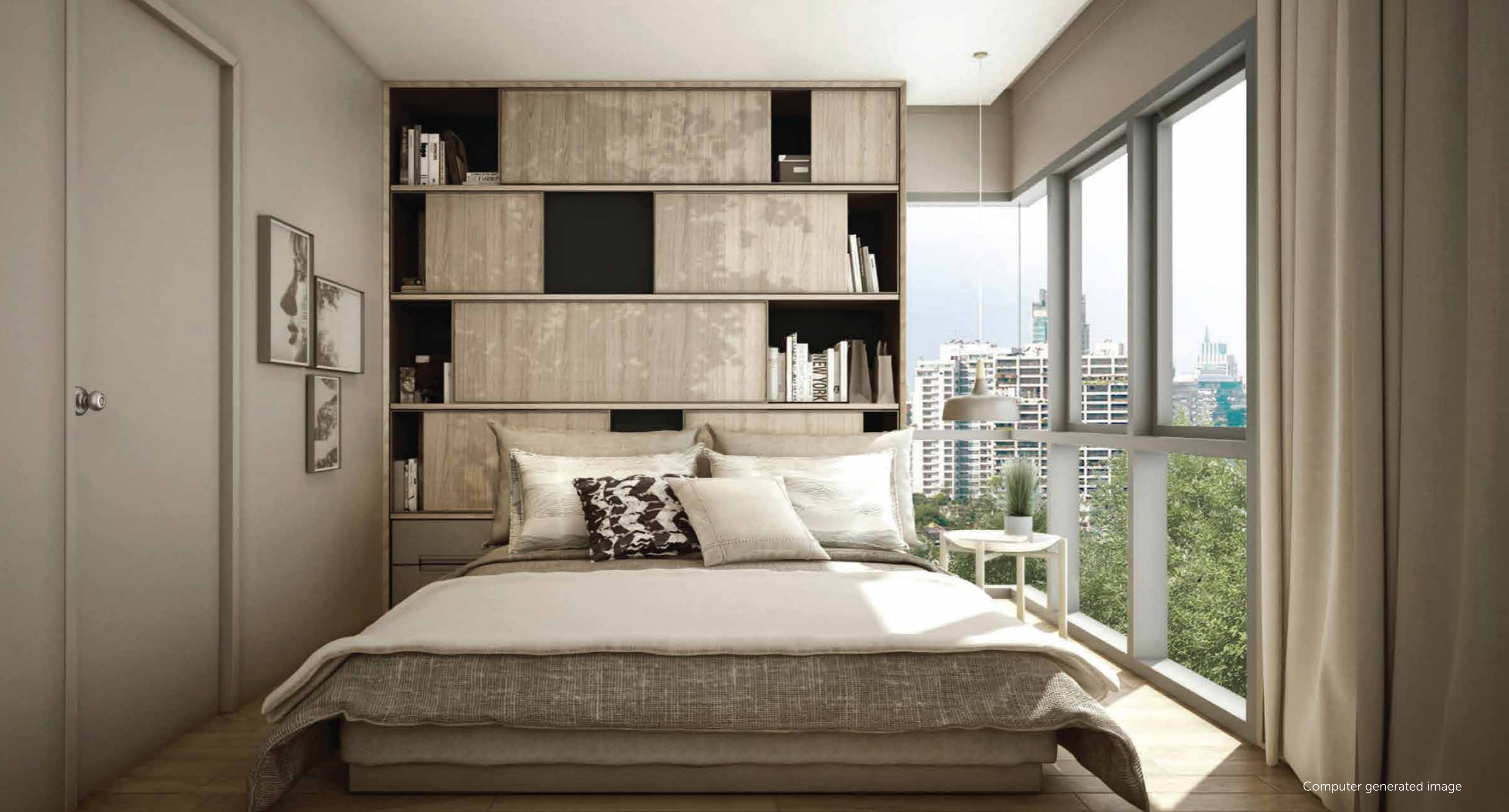


Computer generated image

# ONE BEDROOM TYPE C - Living Room



\*Terms and conditions apply. / Remark: Developer reserves the right to change the above information without prior notice.



Computer generated image

# ONE BEDROOM TYPE C - Bedroom



\*Terms and conditions apply. / Remark: Developer reserves the right to change the above information without prior notice.



Project Name: Aspen Condo Project Owner: Mana Patanakarn Co., Ltd. [Affiliated to Nawarat Patanakarn PCL.] Registered Address: 2/3 Bangna Tower Building A, 18th Floor, Moo 14, Bangna-Trad Road Km. 6.5, Bangkaew Subdistrict, Bangplee District, Samutprakarn 10540 Tel: 02 136 5995 Registered Capital: THB 1100 Million (fully paid) Authorized Persons: 1. Mr. Pasan Swasdiburi 2. Mr. Apichart Rakchang Project Location: Lasalle Road (Sukhumvit 105), Bangna Subdistrict, Bangna District, Bangkok Land Title Deed No.: 2911, The land is under obligation with Krungthai Bank. Project Area: 3-3-78.1 rai Project Features: 2 buildings of 8-storey condominiums with a total of 425 units Project Progress: in the progress of obtaining construction permit Expected Construction Commencement: Q4/2015 Expected Construction Completion: Q3/2017. Juristic person will be registered after project completion. Common area fee, sinking fund, and/or any taxes according to regulations of juristic person will be paid by buyers to the registered juristic person, in accordance with the rate specified under the juristic person regulations. All illustrations are simulated images for advertising purpose only. \*Terms and conditions apply. (Information provided is deemed accurate at the time of publication. Changes may occur without prior notice.)